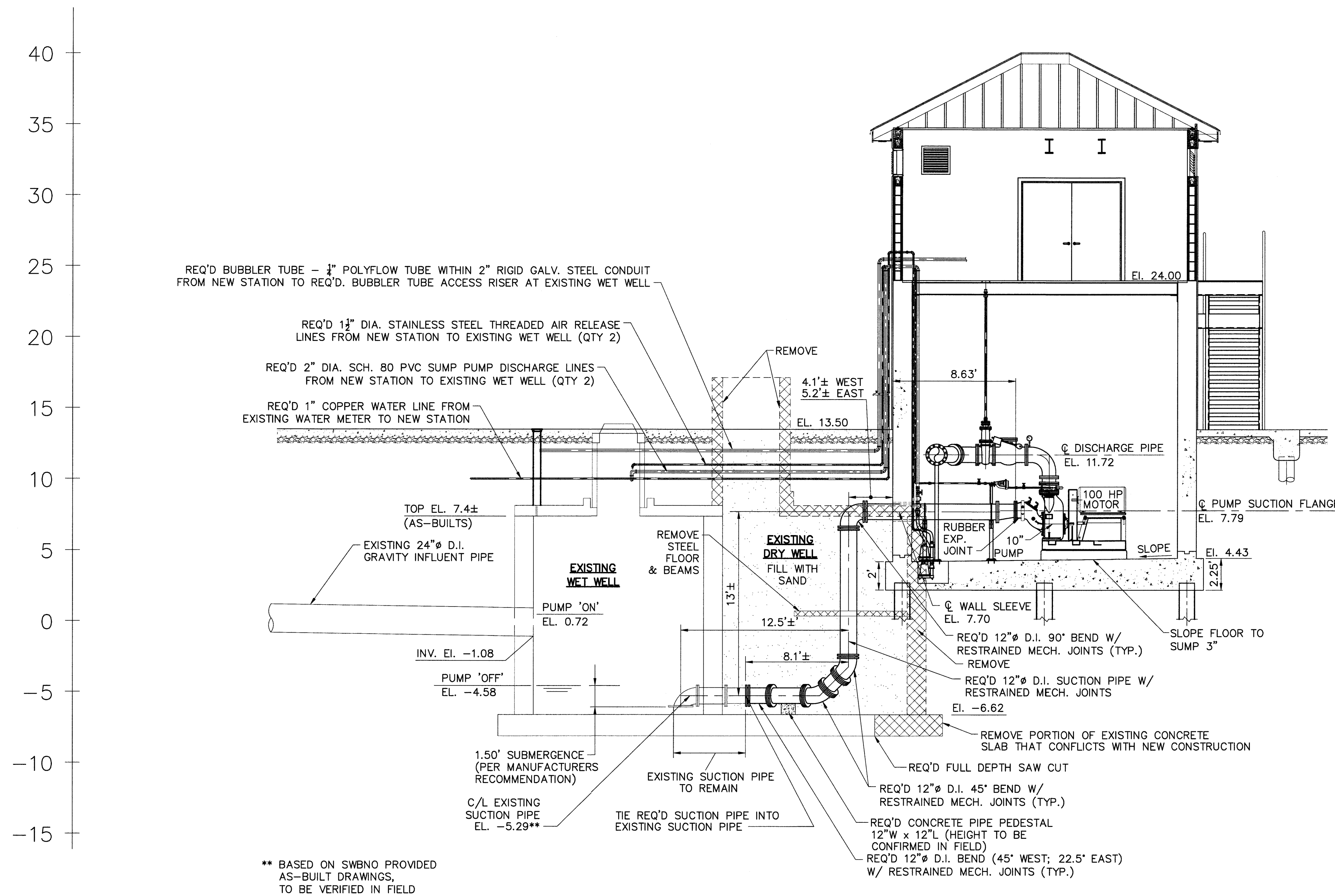


FOR REFERENCE
ONLY



** BASED ON SWBNO PROVIDED
AS-BUILT DRAWINGS,
TO BE VERIFIED IN FIELD

RECORD DRAWING
DATE: 2-10-17


John Holtgreve
JOHN HOLTGREVE, PE
DESIGN ENGINEERING, INC.

RECORD DRAWINGS WERE PREPARED FROM INFORMATION PROVIDED BY THE PROGRAM MANAGER, THE CONTRACTOR AND THE PROGRAM MANAGER'S ON-SITE PROJECT REPRESENTATIVE, AND INFORMATION FROM APPROVED SHOP DRAWINGS.

LAKE FOREST
PUMP STATION CROSS SECTION (LOOKING SOUTHWEST)

SCALE: 1/4" = 1'-0"

0 4' 8'



| | | | |
|--|------------------------|--------------|----|
| MECHANICAL | | | |
| | | | |
| | | | |
| REV. | DATE | DESCRIPTION | BY |
| SEWERAGE AND WATER BOARD OF NEW ORLEANS | | | |
| CONTRACT 3666 HURRICANE KATRINA RELATED 404 HAZARD MITIGATION GRANT PROGRAM REPLACEMENT OF LAKE FOREST SEWAGE PUMPING STATION | | | |
| PIPING CROSS SECTION THROUGH STATION AND WET WELL | | | |
| DR. TH/BD | | | |
| TRC | | | |
| CD | | | |
| DS/OW | GENERAL SUPERINTENDENT | | |
| AP. JH | | | |
| SCALE: AS NOTED | DWG. No. 12037-W-63 | | |
| DATE: JANUARY 2012 | SET NO. | SHEET NO. 26 | |



DESIGN ENGINEERING INC.
3330 West Esplanade Ave. S.
Suite 205
Metairie, LA 70002
(504) 836-2155